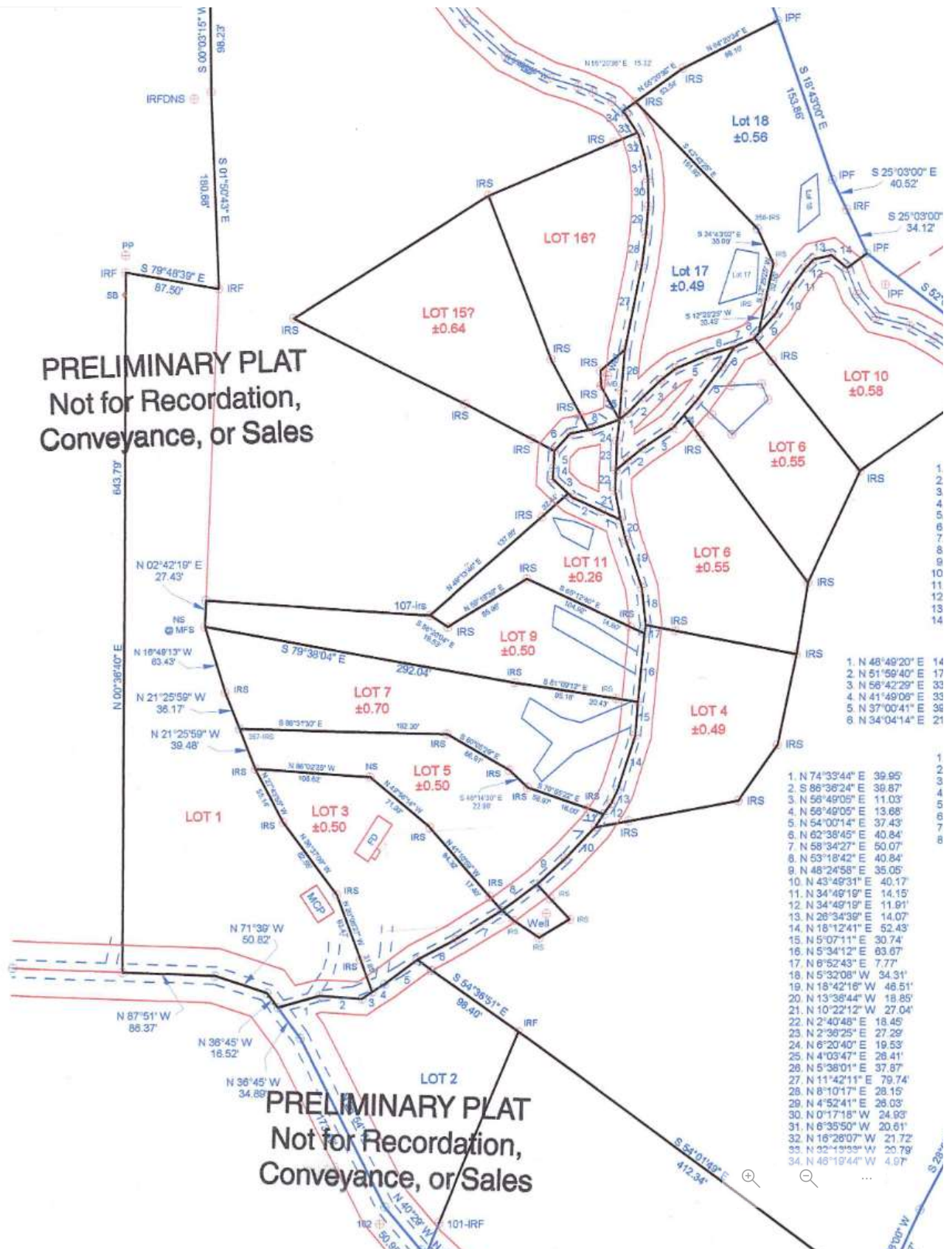




**PRELIMINARY PLAT**  
Not for Recordation,  
Conveyance, or Sales



**PRELIMINARY PLAT**  
Not for Recordation,  
Conveyance, or Sales

1. N 74°33'44" E 39.95'
2. S 88°36'24" E 36.87'
3. N 58°49'05" E 11.03'
4. N 58°49'05" E 13.68'
5. N 54°00'14" E 37.43'
6. N 82°36'45" E 40.84'
7. N 58°34'27" E 50.07'
8. N 53°18'42" E 40.84'
9. N 48°24'58" E 35.05'
10. N 43°48'31" E 40.17'
11. N 34°48'19" E 14.15'
12. N 34°48'19" E 11.91'
13. N 28°34'36" E 14.07'
14. N 18°12'41" E 52.43'
15. N 5°07'11" E 30.74'
16. N 5°34'12" E 63.67'
17. N 8°52'43" E 7.77'
18. N 5°32'08" W 34.31'
19. N 18°42'18" W 46.51'
20. N 13°36'44" W 18.85'
21. N 10°22'12" W 27.04'
22. N 2°40'48" E 18.45'
23. N 2°36'25" E 27.29'
24. N 6°20'40" E 19.53'
25. N 4°03'47" E 28.41'
26. N 5°36'01" E 37.87'
27. N 11°42'11" E 79.74'
28. N 8°10'17" E 28.15'
29. N 4°52'41" E 26.03'
30. N 0°17'18" W 24.93'
31. N 6°35'50" W 20.61'
32. N 16°28'07" W 21.72'
33. N 32°19'53" W 20.79'
34. N 48°19'44" W 4.97'